

# Personal Protective Equipment

FOR HEALTHCARE WORKERS AND COMMUNITY HEALTH WORKERS

## WHAT TYPE OF CLIENTS ARE YOU WORKING WITH?

## WHAT IS YOUR CURRENT OCCUPATION?

Facility-based clinical staff providing direct care



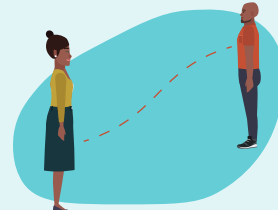
Facility-based non-clinical staff interacting <1 metre away from clients



Community health workers interacting <1 metre away from clients



Community health workers maintaining social distancing



COVID-19 confirmed patients or clients **with** respiratory symptoms

### RECOMMENDED PPE:



Hand hygiene



Respirator (e.g., N95) or Medical mask



N95 respirator for aerosol-generating procedures



Non-sterile gloves



Gown



Face shield

### RECOMMENDED PPE:



Hand hygiene



Respirator (e.g., N95) or Medical mask



Non-sterile gloves



Gown

### RECOMMENDED PPE:



Hand hygiene



Respirator (e.g., N95) or Medical mask



Non-sterile gloves when conducting rapid testing

### RECOMMENDED PPE:



Hand hygiene



Respirator (e.g., N95) or Medical mask



Clients **without** respiratory symptoms

### RECOMMENDED PPE:



Hand hygiene

**Other PPE based on procedure:** Gloves when touching blood or body fluids; face shield or goggles if spray of blood or fluids is likely, gown if soiling anticipated, etc.

### RECOMMENDED PPE:



Hand hygiene

### RECOMMENDED PPE:



Hand hygiene



Non-sterile gloves when conducting rapid testing

### RECOMMENDED PPE:



Hand hygiene

**DON'T FORGET! AVOID SHAKING HANDS AND TOUCHING YOUR FACE, AND MAINTAIN A DISTANCE OF >1 METRE AS A STANDARD PRACTICE.**