

# IMPACT MALARIA: GHANA

## Reducing Malaria in Pregnancy through Improved ANC & IPTp Uptake

Malaria during pregnancy can harm both the mother and the baby. It can cause anemia, miscarriage, premature birth, stunted growth, and low birth weight in infants, which increases the risk of death. PMI Impact Malaria (IM) Ghana, over the period worked with the National Malaria Elimination Programme (NMEP), the Family Health Division (FHD) of the Ghana Health Service (GHS) to train Community Health Officers (CHO) with the required skills to provide Antenatal Care (ANC) and Malaria in Pregnancy (MIP) services under the supervision of a midwife. Community-based Health Planning and Services (CHPS) centers with low ANC visits and low IPTp uptake were targeted for this intervention.



### 4 Target regions with Low ANC & IPTp Uptake

Greater Accra, Western, Northern & Eastern Region

**71** Mentors (Midwives, Data Officers, and pharmacists) trained to supervise CHOs in ANC provision, IPTp administration, data and logistics management



**154**

Community-based Health Planning and Services (CHPS) centers reached in 4 Regions

**567**

CHOs trained and mentored in ANC provision, IPTp administration, data and logistics management

**311**  
Females  
**256**  
Males



CHOs demonstrated competency in providing basic ANC services with assessment scores above 80%

### Improvement in Facility ANC Visits by Pregnant Women



The intervention resulted in increased number of pregnant women seeking ANC services within the 154 CHPS facilities where CHOs were trained.

Oct - Dec 2020  
**53, 282** ANC visits

Oct - Dec 2021  
**54, 221** ANC visits

Oct - Dec 2022  
**56, 875** ANC visits

### Improved IPTp Dose Uptake



Intermittent Preventive Treatment in pregnancy (IPTp) is a curative dose of an antimalarial medicine (Sulfadoxine-Pyrimethamine) given to pregnant women under directly observed therapy to prevent malaria in pregnancy

#### 1st IPTp Dose Coverage



#### 3rd IPTp Dose Coverage



Data Source: District Health Information Management Software 2 (DHIMS2), 2023



U.S. President's Malaria Initiative



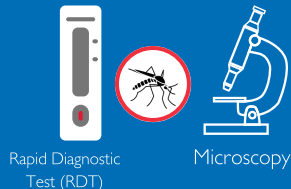
**IMPACT**  
**MALARIA**  
Advancing Malaria Service Delivery

PMI Impact Malaria is the flagship global malaria service delivery project of the U.S. President's Malaria Initiative

# IMPACT MALARIA: GHANA


## Strengthening the Quality of Malaria Diagnostics

Prompt malaria diagnosis either by microscopy or rapid diagnostic tests (RDTs) is recommended by WHO for all patients with suspected malaria before they are given treatment. Early and accurate diagnosis is essential for effective management of the disease and for strong malaria surveillance.



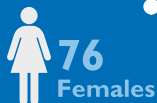
Rapid Diagnostic Test (RDT)

Microscopy

 PMI Impact Malaria (IM) Ghana, has supported the National Malaria Elimination Programme (NMEP), and the Clinical Laboratory Unit of the Ghana Health Service, to scale-up and strengthen diagnostic testing for malaria, in all 16 regions across the country from September, 2019 to July, 2022

310

Medical Laboratory Scientists (MLS) have been trained on how to use Outreach Training & Supportive Supervision (OTSS) tools to enhance the capacity of microscopists in all 16 regions)



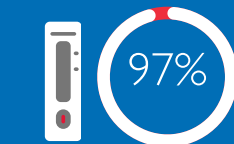
76

Females



244

Males



From 2020 to 2022, malaria testing rates have held steady at 97% nationally through improved health worker competence in malaria RDT and microscopy use. This record is above the global 2025 benchmark of 90%

5 Rounds of laboratory Outreach Training and Supportive Supervision (OTSS) visits were conducted to reach microscopists

A total of  
**1,160**  
health facilities  
across all the 16  
regions were reached



Facility-based  
diagnostics mentoring  
reached

**3,216**

Laboratory scientists



6 Medical Laboratory Scientists (MLS) have been supported to obtain World Health Organization's (WHO) microscopy certifications.

29 Regional microscopy supervisors were supported to obtain the National Competency Assessment for Malaria Microscopy (NCAMM) certifications



PMI Impact malaria supported the replenishment of

**6,890**

sample slides at the National Malaria Slide Bank to support training and accurate diagnostics



U.S. President's Malaria Initiative

PMI  
**IMPACT**  
**MALARIA**  
Advancing Malaria Service Delivery

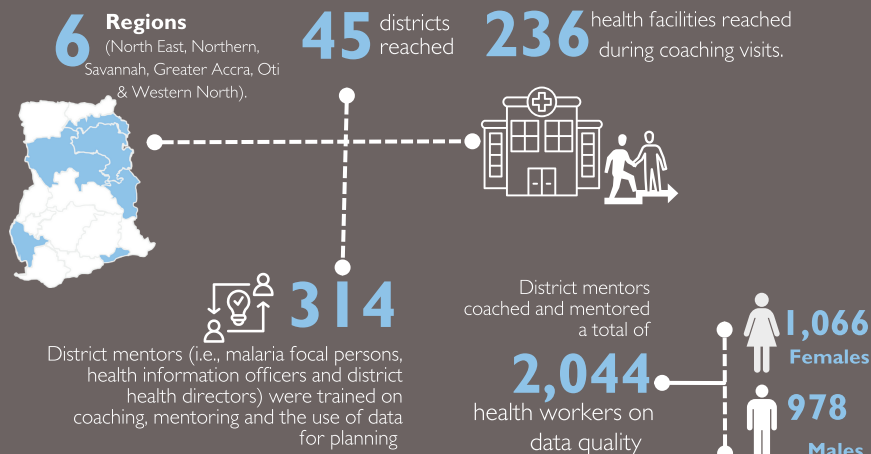
PMI Impact Malaria is the flagship global malaria service delivery project of the U.S. President's Malaria Initiative

# IMPACT MALARIA: GHANA

## Improving Malaria Data Quality Through Coaching & Supportive Supervision

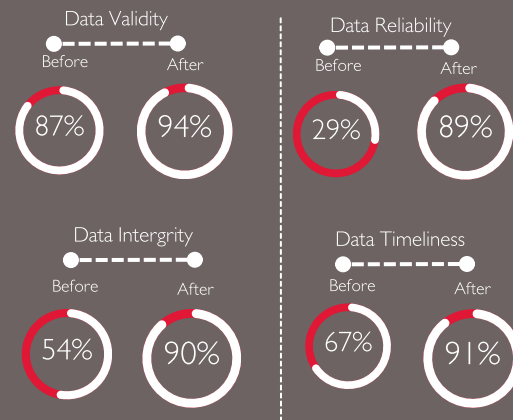
Inadequate & accurate data capture, insufficient documentation of services offered, and low use of data for decision-making were identified as gaps affecting malaria care delivery in 45 districts in six regions (North East, Northern, Savannah, Greater Accra, Oti and Western North regions). PMI Impact Malaria (Ghana), provided assistance to the National Malaria Elimination Program (NMEP) and Regional Health Management Teams (RHMT) to address these gaps through coaching and supportive supervision of health workers. Activities included; training on Ghana Health Service's guidelines for Health Information Management Systems (HIMS), usage of standard malaria registers and reporting forms as well as data capture and visualization using wallcharts for effective health planning and decision-making.

### Coaching Visits to Health Facilities (2021-2022)



### Improvement in Data Quality (2021-2022)

Performance monitoring and data quality of malaria indicators assessment at 236 health facilities in six regions.



U.S. President's Malaria Initiative



PMI  
**IMPACT**  
**MALARIA**  
Advancing Malaria Service Delivery

PMI Impact Malaria is the flagship global malaria service delivery project of the U.S. President's Malaria Initiative

# IMPACT MALARIA: GHANA

## Empowering Community Health Officers in Malaria & Febrile Illness Management

The PMI Impact Malaria (IM) project partnered with the National Malaria Elimination Program (NMEP) to strengthen the capacity of Community Health Officers (CHOs) to manage malaria and febrile illnesses at local community health centers. Through an internship program under the mentorship and supervision of experienced medical doctors, pharmacists, and senior nurses, the CHOs gained essential skills in patient case referral and compliance with guidelines for the management of febrile illnesses, and uncomplicated and severe malaria. Over the period, CHOs demonstrated improved competency in patient history-taking, physical examination, effective case management, and patient referral.



**12 Regions**

Ashanti, Bono, Bono East, Eastern, Volta, North East, Northern, Oti, Savannah, Upper West, Greater Accra, Western North

**63 Districts**

**585** Community-based Health Planning & Service (CHPS) centers reached from 2019, 2021 and 2022



**268**



Health workers including medical doctors, pharmacists, senior nurses and midwives were trained as mentors to supervise CHOs

**2,160**

CHOs trained and mentored in febrile illness management, referrals and uncomplicated malaria management

**1,092**  
Females

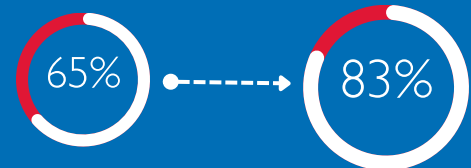


**1,068**  
Males



### CHO's Competency Assessment Results

Pre-training/mentoring Post-training/mentoring



Measuring the competence of CHOs after the training, an average pre-course assessment score of 65% improved to an average post-test score of 83%, reflecting significant learning to improve service delivery